



E-ISSN: 2278-4136  
P-ISSN: 2349-8234  
JPP 2019; 8(6): 1996-1997  
Received: 12-09-2019  
Accepted: 16-10-2019

**OP Sonvancee**

Ph.D., Scholar, Economics. CoA,  
Raipur, Indira Gandhi Krishi  
Vishwavidyalaya, Raipur,  
Chhattisgarh, India

**Om Kumar Netam**

Ph.D., Scholar, Economics. CoA,  
Raipur, Indira Gandhi Krishi  
Vishwavidyalaya, Raipur,  
Chhattisgarh, India

**Dr. AK Koshta**

Professor, Department of  
Agriculture Economics. CoA,  
Raipur Indira Gandhi Krishi  
Vishwavidyalaya, Raipur,  
Chhattisgarh, India

**Corresponding Author:****OP Sonvancee**

Ph.D., Scholar, Economics. CoA,  
Raipur, Indira Gandhi Krishi  
Vishwavidyalaya, Raipur,  
Chhattisgarh, India

*Short Note*

## Relative analysis and percentage change of arrival and model price of Lathyrus in Krishi Upaj Mandi, Chhattisgarh plains

OP Sonvancee, Om Kumar Netam and Dr. AK Koshta

**Introduction**

In Chhattisgarh, the total area under pulses was 8.14 lakh ha and production was 4.84 lakh metric tonnes, which rises 43 per cent in 2017-18 as compared to 2003-04. Production of Lathyrus 1.72 lakh metric tonnes and second leading (35.59%) pulse crop out of total pulses grown in Chhattisgarh. Five Lathyrus growing districts of Chhattisgarh are Mungeli, Bemetra, Kabirdham, Rajnandgaon and Bilaspur & have identified in term of area and production first Mungeli district (Commissioner of Land Revenue, 2016-17). Lathyrus arrivals was more in KUM, Mungeli, KUM, Bhatapara, KUM, Rajnandgaon, KUM, Kawardha and KUM, Bemetra then that of other Krishi Upaj Mandis of Chhattisgarh plains (CG Mandi Board, 2016-17). The farmers are facing various problems during marketing of their produce; these are exploitation by traders and price fluctuation of produce *etc.* It is important to understand and examine that how much total arrivals of Lathyrus over years and how the model price to marketing of Lathyrus in selected Mandi.

The relative analysis and percentage change of arrival and model price of Lathyrus in Krishi Upaj Mandi, Chhattisgarh plains was estimated by using the simple average and percentage methods.

$$1. \text{Percentage Change} = \frac{(\text{current year} - \text{base year})}{\text{base year}} * 100$$

The Arrival, model price and percentage change of model price of Lathyrus in KUM, Chhattisgarh plains were noticed that relative relationship for fifteen years of Lathyrus from 2003-04 to 2017-18 (Table 1 and Figure 1)

The table indicated, that arrivals of Lathyrus was found increased with 100.50 per cent. Noticed that the maximum and minimum arrival were 224336 qtl (2014-15) and 76254 qtl (2009-10) respectively.

The table indicated that model price Lathyrus in selected mandis of Chhattisgarh plains was found increased from 2003-04 to 2017-18. The model price was varied from Rs./qtl68/- to Rs./qtl 2906 during over fifteen years. Percentage change in 2003-04 over 2017-18 of model price of Lathyrus was 132.46 per cent.

**Conclusion**

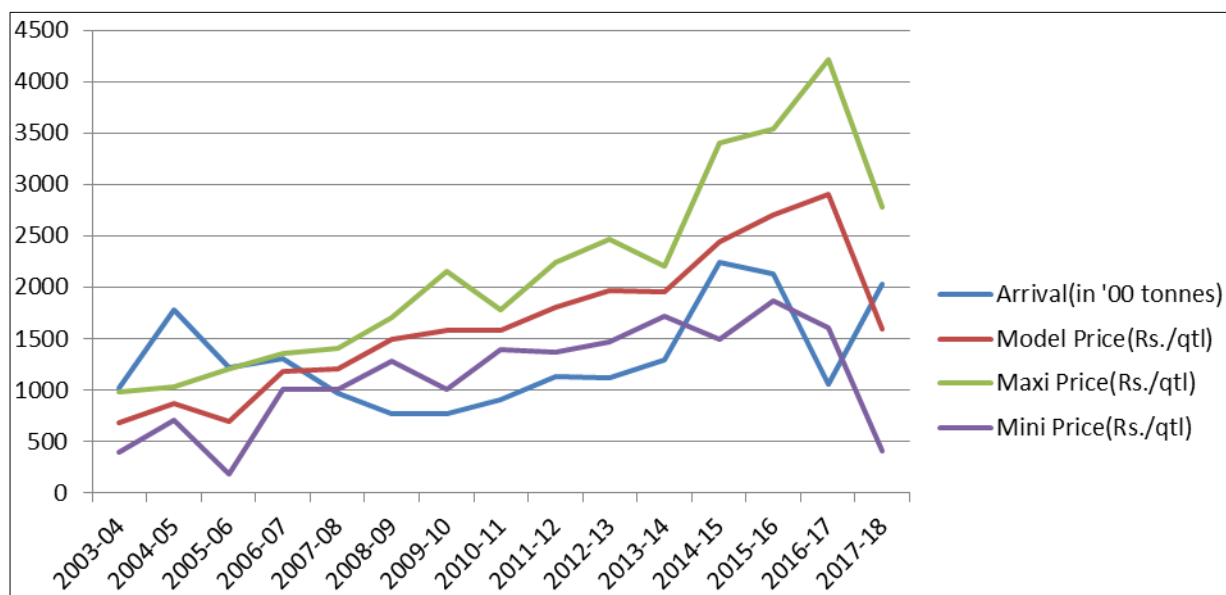
Lathyrus is grown as relay crop, which also called the bonus crop that involved low cost for their cultivation. Government of India does not involved Lathyrus to announce the MSP. In these facts, farmers are being replacing the Lathyrus by lentil, coriander and chickpea.

**Table 1:** Relative analysis and percentage change of arrival, model price maximum price and minimum price of Lathyrus in Krishi Upaj Mandi, Chhattisgarh plains

Particular	2003-04	2004-05	2005-06	2006-07	2007-08	2008-09	2009-10	2010-11	2011-12
Arrival(in qtl)	101197	178264	121960	130450	96444	76411	76254	90834	112762
Model Price(Rs./qtl)	684	865	693	1180	1205	1491	1576	1585	1807
Maxi Price(Rs./qtl)	978	1030	1200	1360	1410	1701	2148	1780	2247
Mini Price(Rs./qtl)	390	700	185	1000	1000	1280	1004	1390	1367

Conti...

Particular	2012-13	2013-14	2014-15	2015-16	2016-17	2017-18	Percentage change in 2003-04 over 2017-18
Arrival(in qtl)	111345	129720	224336	212515	105541	202901	100.50
Model Price(Rs./qtl)	1964	1960	2446	2700	2906	1590	132.46
Maxi Price(Rs./qtl)	2466	2206	3399	3535	4213	2780	184.25
Mini Price(Rs./qtl)	1461	1714	1492	1864	1598	399	2.31

**Fig 1:** Relative analysis of arrival, model price, maximum price and minimum price of Lathyrus in KUM, Chhattisgarh plains

## References

1. Agricultural Year Table Commissioner of Land Revenue Raipur, Chhattisgarh, 2016, 54-64.
2. Chhattisgarh me krishi vipdan. Directorate of Economics and Statistics, Raipur, Chhattisgarh, 2013, 48.
3. Divya K, Rajeswari S. A study on price behavior of important pulses in Andhra Pradesh. M.Sc. Thesis, Acharya N. G. Ranga Agriculture University, Guntur, 2015, 191.
4. Thakar KP, Singh SR, Soumya C, Chaudhari DD. An economic analysis of price movement of major pulse crops of North Gujarat. International Journal of Agriculture Sciences. 2017; 9(30):4422-4426. <http://cg.nic.in/agrimandi>